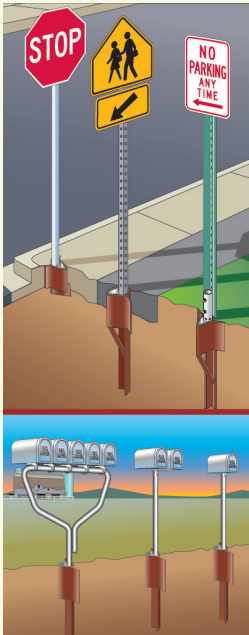


BREAKAWAY SIGN-POST REGULATIONS!



V-Loc post
ANCHORS



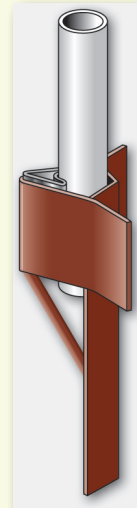
FLUSH MOUNT Helps prevent vehicle rollovers by eliminating above-ground extensions, reducing tort liability.

NCHRP 350 APPROVED Safety for drivers. Breakaway feature will allow product to breakaway from car as it's struck.

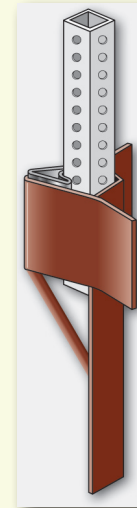
GUARANTEED REUSABILITY Saves the customer time and money as only the damaged post will need replacement.

STABILIZER BAR & BOLT Will keep the post stable in any weather condition. Anti-twist and turning.

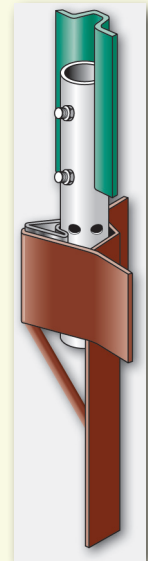
YIELD AND RELEASE METHODS Allocates time for post to pop up which allows drivers to drive through.



RHVR323R
For 2 3/8 Round Posts
RHVR330R
For 3 Round Posts



RHVS3175S
For 1 3/4 Square Posts
RHVS3200S
For 2 Square Posts



RHVRU19U
For 2-3 lb U-Channel Posts

NOW is the time to begin using "Breakaway" supports for signs to replace those that are non-conforming

Here's Why: Breakaway Sign Supports are Required!

Rigid objects close to a roadway can become hazards when struck by a vehicle that strays off the pavement. Supports for road signs frequently placed close to the roadway, are hazards if they're not designed, manufactured and constructed to break away upon impact. Even relatively small and innocent looking road sign supports can be deadly if they are not designed to break away. The Manual on Uniform Traffic Control Devices (MUTCD), which is the national standard used for all roads open to public travel, states in Section 2A-19: "... **Ground-mounted sign supports shall be breakaway, yielding or shielded with a longitudinal barrier or crash cushion if within the clear zone.**" ... This requirement applies to all roads, whether publicly or privately owned. Although state highway agencies are generally in compliance already, the Federal Highway Administration (FHWA) is concerned that many local agencies may not be aware of this requirement.

MUTCD: All non-breakaway sign supports shall be replaced by January 2013

The FHWA realizes that no agency can inventory, inspect, design, and replace non-breakaway sign supports overnight. The easiest way to accomplish this is to begin using breakaway supports when installing new signs or replacing damaged supports. All non-breakaway sign supports within the clear zone of roads posted at 50 mph or greater shall be replaced by January 2013. Thus you can save yourself time and money by using only compliant supports NOW for new installations, as well as when replacing existing, damaged sign post supports.

Approvals



FHWA Accepted under SS-72 & B-13; AASHTO Recommended State Approvals Listing/Letters available upon request.

Patented Product!

Accessories



V-Loc post ANCHORS



RHVLOCHDWP
Heavy Duty
Wedge Puller



RHVLOCLDWP
Light Duty
Wedge Puller



RHCOCBRACOMBI
Cobra Combi 1



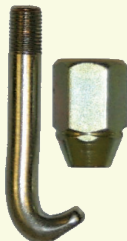
RHCOCBRAMK1
Cobra MK 1

- **The V-Loc System** allows you to reuse the anchor socket knockdown after knockdown; only the wedge and post will need to be replaced, saving you time and money.
- **V-loc** is perfect for installation in concrete, asphalt, or earth.

Custom
V-Loc's
Available



RHVLOCHDTIP
Heavy Duty
Replacement Tip
RHVLOCHDNUT
Heavy Duty
Replacement Nut



RHVLOCLDTIP
Light Duty
Replacement Tip
RHVLOCLDNUT
Light Duty
Replacement Nut

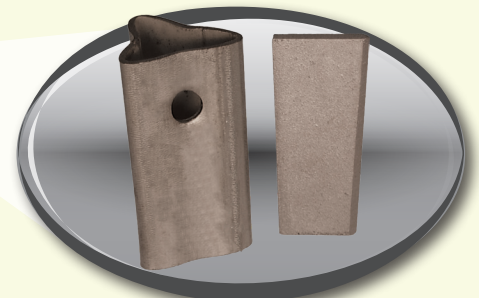
For more information on **safer sign supports:**
http://safety.fhwa.dot/dog/roadway_dept/safersigns.htm



RHVLOCTROWEL
For Cleanout



**Wedge & Insert
Assembly**



RHVLOCWEDWEDGE Wedge
RHVLOCWEDINSERT Insert for High Stress
Conditions



**CALL
FOR
QUOTE**

VOICE: 1-800-367-1492
601-932-5854
FAX: 1-800-206-3444
601-932-7178

www.cpcsigns.com

**V-LOC
Breakaway
Post Anchors**